

A

B

C

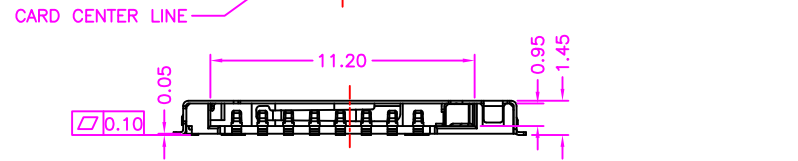
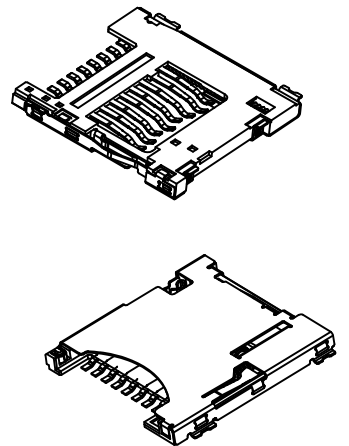
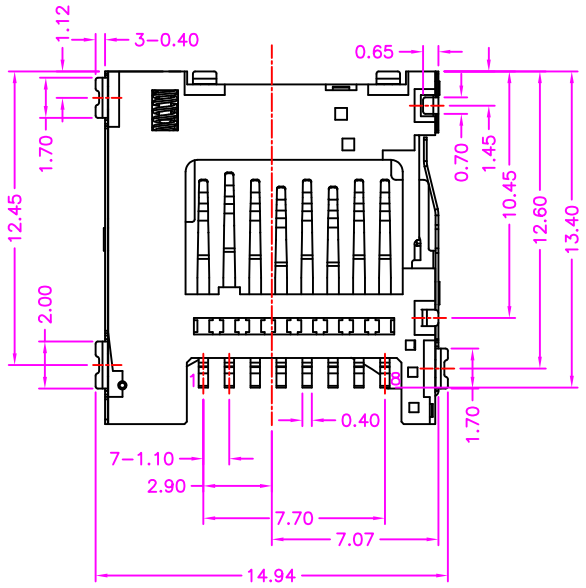
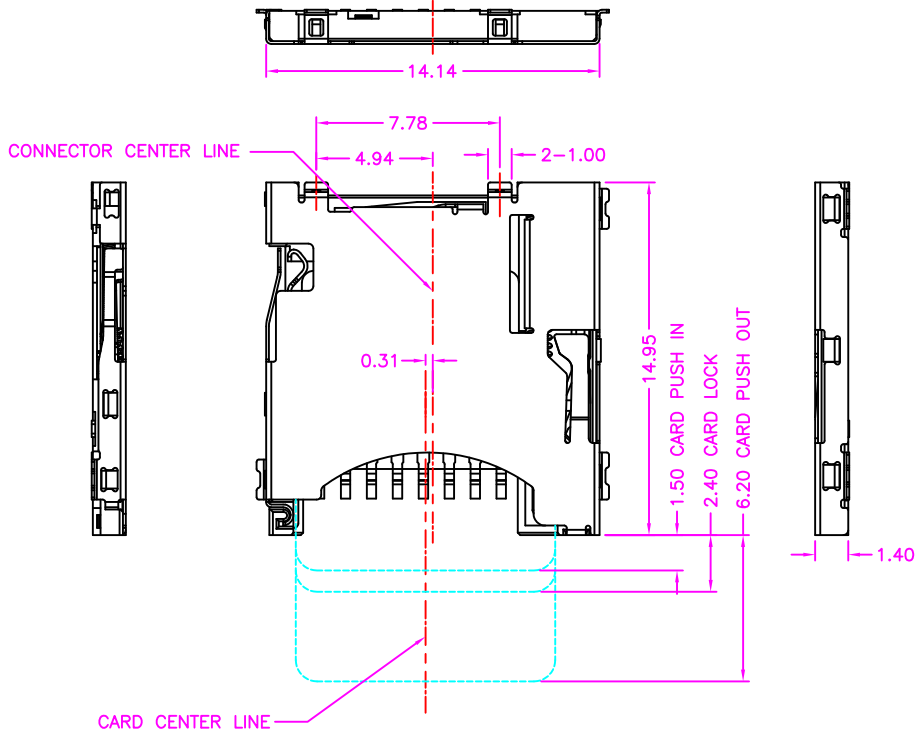
D

A

B

C

D



MATERIALS

HOUSING: HI-TEMP. PLASTIC (UL 94V-0), BLACK
 SHELL: STAINLESS STEEL, NICKEL PLATING
 SOLDER PAD: STAINLESS STEEL, GOLD PLATING
 TERMINAL: COPPER ALLOY, GOLD PLATED ON CONTACT AREA
 TIN PLATING ON SOLDER TAIL

SPECIFICATION

CURRENT RATING: 0.5 AMP MAX
 DIELECTRIC WITHSTANDING: 500V AC FOR ONE MINUTE
 CONTACT RESISTANCE: 100m OHMS MAX
 INSULATION RESISTANCE: 1000M OHMS MIN AT DC 500V
 OPERATION TEMPERATURE: -25°C~+85°C

PART NUMBER:

MMCKD - 0 8 * T - 1 2 5

SERIES — NO. OF POS. — CONTACT PLATED OPTION — TAPE REEL PACKAGE — TIN PLATING ON SOLDER TAIL

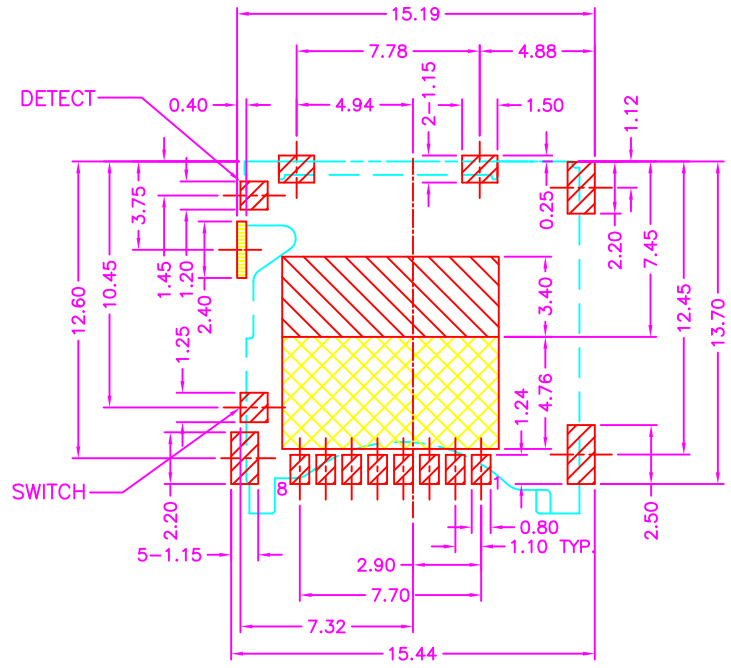
CONTACT PLATED OPTION

- 1: GOLD FLASH
- 3: 3u" GOLD
- 5: 5u" GOLD
- 6: 10u" GOLD
- 7: 15u" GOLD
- 9: 30u" GOLD



TOLERANCES	
X.±0.40	.XX±0.20
.X±0.30	.XXX±0.10

REV.	A	DRAWN BY	Zhong 2018/3/15	TITLE	MICRO SD, PCB MOUNT, SMT, METAL SHIELD PUSH-PUSH TYPE FEMALE, H=1.45mm				
		APPROVED BY	Lion 2018/3/15	DRAW NO.	MMCKD-005	UNIT	MM	Sheet	1/2



P.C.B. LAYOUT
TOP VIEW ±0.05

- PAD AREA
- PATTERN PROHIBITION AREA
- SOLDER PROHIBITION AREA
- PROHIBITION AREA

NAME	TYPE
P1	DAT2
P2	CD/DAT3
P3	CMD
P4	VDD
P5	CLK
P6	VSS
P7	DAT0
P8	DAT1

