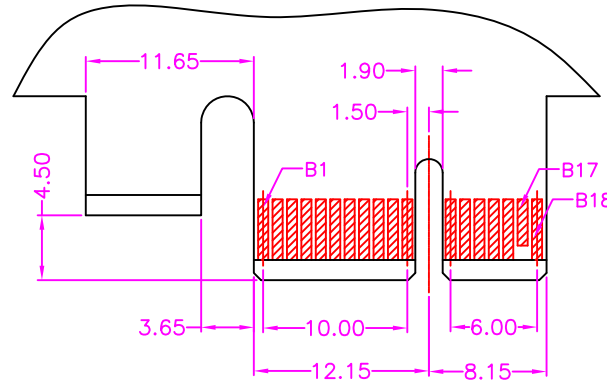
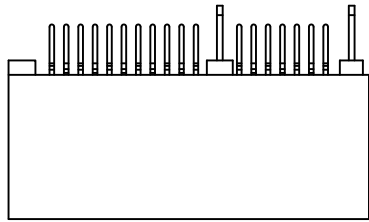
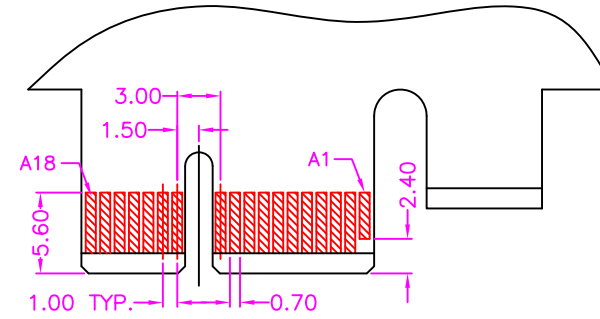


A

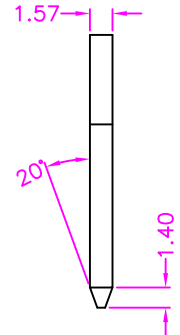
A



RECOMMENDED EDGE CARD PATTERN(PRIMARY SIDE)

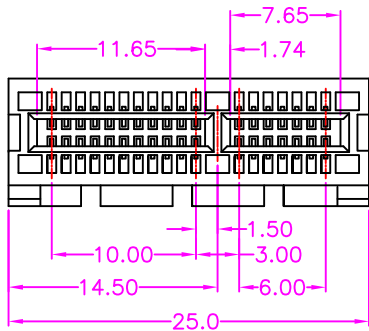


RECOMMENDED EDGE CARD PATTERN(SECONDARY SIDE)



B

B



MATERIALS

HOUSING: PBT (UL 94-HB)
 BOARDLOCK: SPCC, NICKEL PLATING
 TERMINAL: COPPER ALLOY, GOLD PLATED ON CONTACT AREA
 TIN PLATING ON SOLDER TAIL

SPECIFICATION

CURRENT RATING: 1.1 AMP MAX
 DIELECTRIC WITHSTANDING: 500V AC FOR ONE MINUTE
 CONTACT RESISTANCE: 30m OHMS MAX
 INSULATION RESISTANCE: 1000M OHMS MIN AT DC 500V
 OPERATION TEMPERATURE: -55°C~+105°C

PART NUMBER:

MCEEB - 3 6 * T - 1 5 2

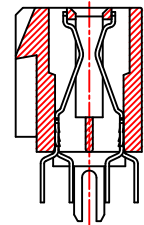
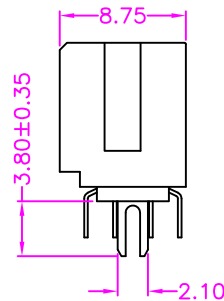
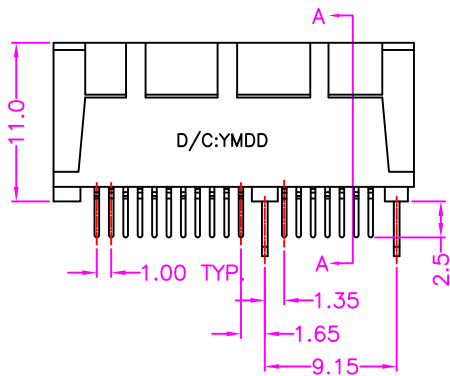
SERIES — NO. OF POS. — TIN PLATING ON SOLDER TAIL — BOX PACKAGE

CONTACT PLATED OPTION

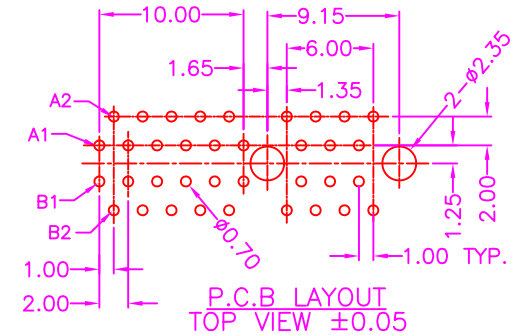
- 1: GOLD FLASH
- 3: 3u" GOLD
- 5: 5u" GOLD
- 6: 10u" GOLD
- 7: 15u" GOLD
- 9: 30u" GOLD

C

C



SECTION A-A



P.C.B LAYOUT TOP VIEW ±0.05

D

D



| TOLERANCES | |
|------------|-----------|
| X.±0.40 | .XX±0.20 |
| .X±0.30 | .XXX±0.10 |

| | | | | | | | | | |
|------|---|-------------|-----------------|----------|--------------------------------------------------------------------------------------|------|----|-------|-----|
| REV. | A | DRAWN BY | Zhong 2018/2/27 | TITLE | PCI EXPRESS, 1.00mm PITCH, PCB MOUNT, VERTICAL, FEMALE, 1 KEY WITH BOARDLOCK, 36 PIN | | | | |
| | | APPROVED BY | Lion 2018/2/27 | DRAW NO. | MCEEB-002 | UNIT | MM | Sheet | 1/1 |

| | | | | | | | |
|-------------|-----------------|----------|--------------------------------------------------------------------------------------|------|----|-------|-----|
| DRAWN BY | Zhong 2018/2/27 | TITLE | PCI EXPRESS, 1.00mm PITCH, PCB MOUNT, VERTICAL, FEMALE, 1 KEY WITH BOARDLOCK, 36 PIN | | | | |
| APPROVED BY | Lion 2018/2/27 | DRAW NO. | MCEEB-002 | UNIT | MM | Sheet | 1/1 |