

P1: SMA

P2: TS9

INFORMATION

- P1: SMA, WHITE IN INSULATOR COLOR, GOLD PLATED ON SHELL
GOLD PLATING ON CONTACT AREA
- P2: TS9, WHITE IN INSULATOR COLOR, NICKEL PLATED ON SHELL
GOLD PLATING ON CONTACT AREA
- CABLE: 1.13mm, BLACK
- HEAT SHRINK TUBE: THERMOPLASTIC, BLACK
- NUT: COPPER ALLOY, GOLD PLATING
- WASHER: COPPER ALLOY, GOLD PLATING
- O-RING: THERMOPLASTIC, BLACK

SPECIFICATION

- IMPEDANCE: 50 OHMS
- FREQUENCY RANGE: 0-6 GHz
- VSWR: 2.00 MAX

PART NUMBER:

LSATS - * 1 - 4 2

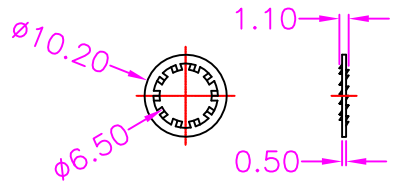
SERIES

CONTACT PLATED OPTION

- 1: GOLD FLASH
- 3: 3u" GOLD
- 5: 5u" GOLD
- 6: 10u" GOLD
- 7: 15u" GOLD
- 9: 30u" GOLD



NUT



WASHER



TOLERANCES	
X.±0.40	.XX±0.20
.X±0.30	.XXX±0.10

REV.	A	DRAWN BY	Zhong 2019/9/16	TITLE	SMA (WATERPROOF) VERTICAL FEMALE TO TS9 R/A MALE, CABLE				
		APPROVED BY	Lion 2019/9/16	DRAW NO.	LSATS-002	UNIT	MM	Sheet	1/1