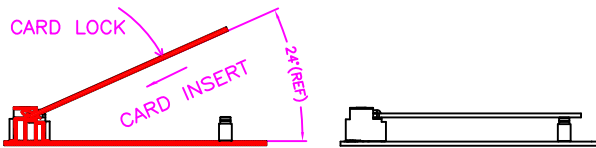
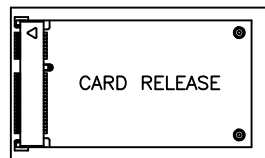
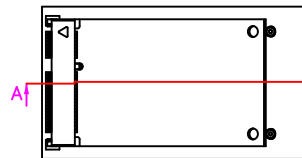
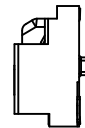
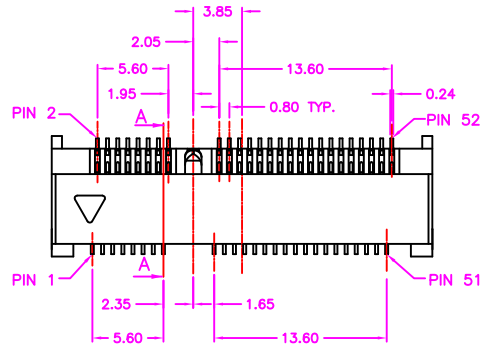
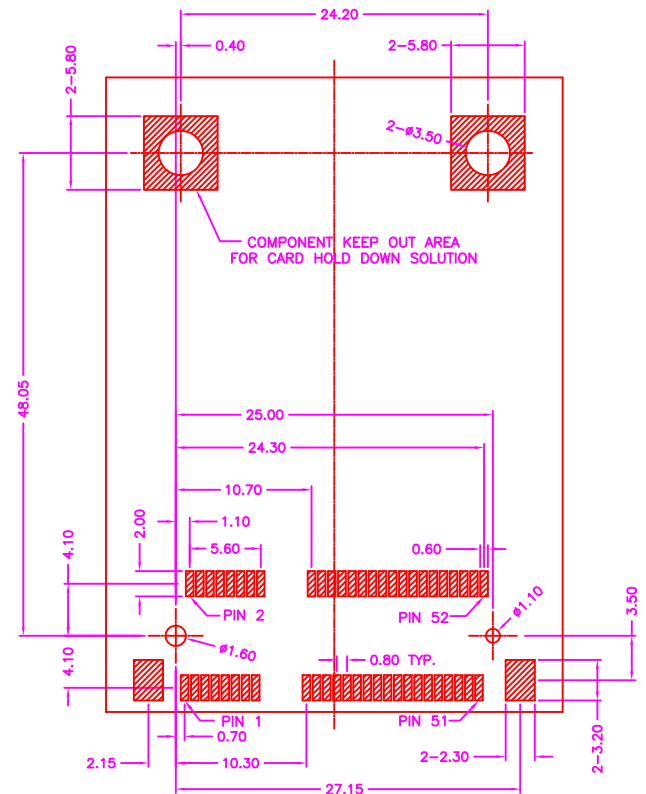


SECTION A-A



SECTION A-A



P.C.B LAYOUT  
TOP VIEW ±0.05

**MATERIALS**

HOUSING: LCP (UL 94V-0)  
SOLDER PAD: COPPER ALLOY, TIN PLATING  
TERMINAL: COPPER ALLOY, GOLD PLATED

**SPECIFICATION**

CURRENT RATING: 0.5 AMP MAX  
DIELECTRIC WITHSTANDING: 300V AC FOR ONE MINUTE  
CONTACT RESISTANCE: 55m OHMS MAX  
INSULATION RESISTANCE: 500M OHMS MIN AT DC 500V  
OPERATION TEMPERATURE: -40°C~+85°C

**PART NUMBER:**

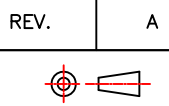
MCEFT - 5 2 \* - 1 2 2 \*  
SERIES NO. OF POS. POST OPTION  
CONTACT PLATED OPTION  
1: GOLD FLASH  
3: 3u" GOLD  
5: 5u" GOLD  
6: 10u" GOLD  
7: 15u" GOLD  
9: 30u" GOLD  
TAPPE REEL PACKAGE

**INFORMATION**

COMPATIBLE COPPER TUBE DRAWING NO: ZMCEFT-001  
COMPATIBLE SCREW DRAWING NO: ZMCEFT-002



TOLERANCES  
X.±0.40 .XX±0.20  
.X±0.30 .XXX±0.10

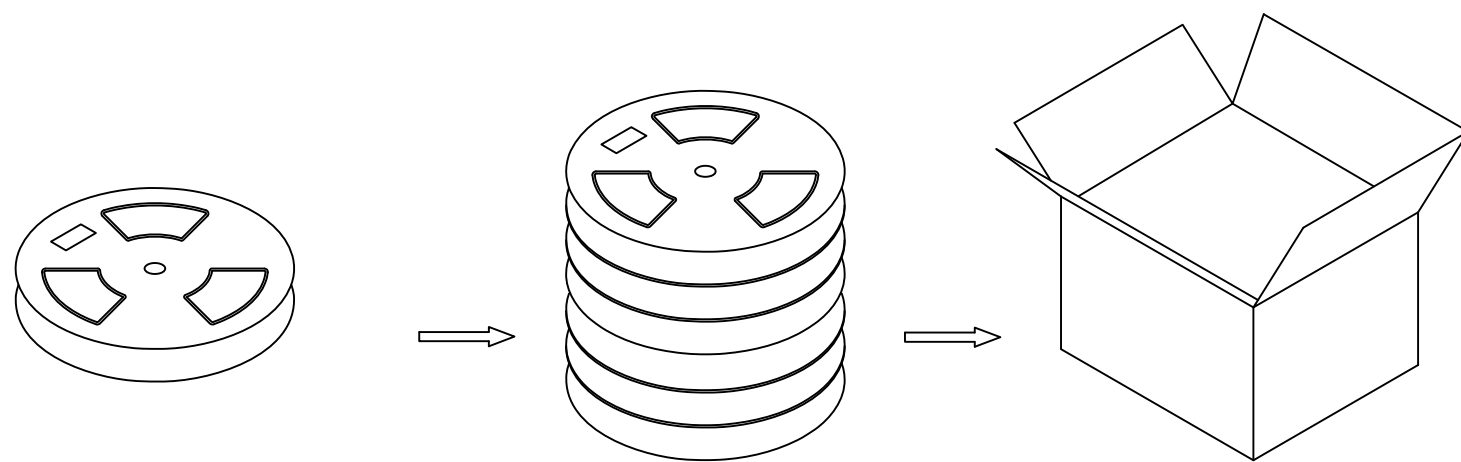
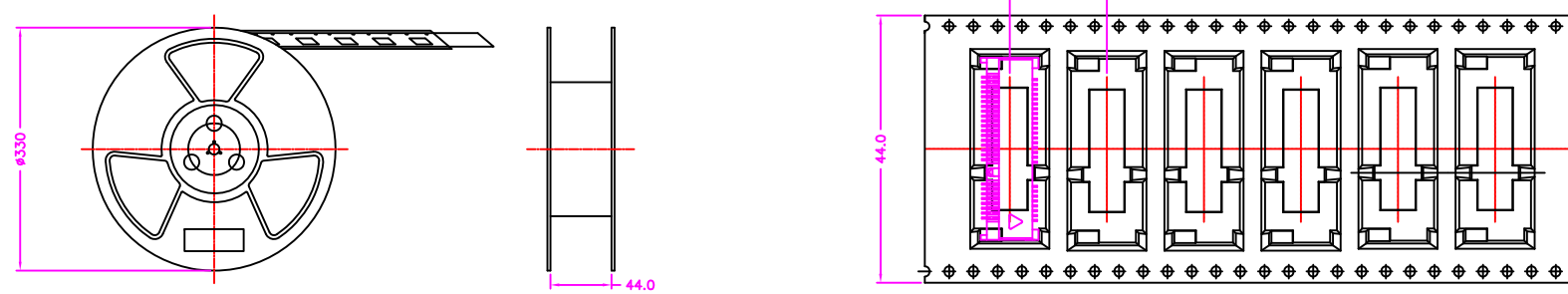


REV. A DRAWN BY Zhong 2020/3/9  
APPROVED BY Lion 2020/3/9

TITLE DRAW NO. MCEFT-002

MINI PCI EXPRESS, 0.80mm PITCH, PCB MOUNT, SMT, FEMALE, 1 KEY, WITH PAD HEIGHT=5.20mm

UNIT MM Sheet 1/2



NOTE: 600PCS/ REEL, 3600PCS/ 6 REEL/ CARTON



TOLERANCES	
X.±0.40	.XX±0.20
.X±0.30	.XXX±0.10

REV.	A

DRAWN BY	Zhong 2020/3/9
APPROVED BY	Lion 2020/3/9

TITLE	MINI PCI EXPRESS, 0.80mm PITCH, PCB MOUNT, SMT, FEMALE, 1 KEY, WITH PAD HEIGHT=5.20mm				
DRAW NO.	MCEFT-002	UNIT	MM	Sheet	2/2