

TABLE

POS.	A	B	C	D
06	17.8	17.0	15.4	12.5
04	12.8	12.0	10.4	7.50

P.C.B. LAYOUT
TOP VIEW ±0.05

MATERIALS

HOUSING: HI-TEMP. PLASTIC (UL 94V-0), BLACK
 SOLDER PAD: COPPER ALLOY, TIN PLATING
 FORK: COPPER ALLOY, TIN PLATING
 TERMINAL: COPPER ALLOY, GOLD PLATED

SPECIFICATION

CURRENT RATING: 3 AMP MAX
 DIELECTRIC WITHSTANDING: 1000V AC FOR ONE MINUTE
 CONTACT RESISTANCE: 50m OHMS MAX
 INSULATION RESISTANCE: 1000M OHMS MIN AT DC 500V
 OPERATION TEMPERATURE: -40°C~+85°C

PART NUMBER:

ABTGW - * * * - 1 2 1

SERIES — * * * — TAPE REEL PACKAGE
 NO. OF POS. — 1 2 1
 REF TABLE

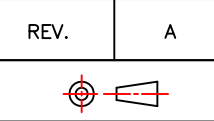
CONTACT PLATED OPTION

- 1: GOLD FLASH
- 3: 3u" GOLD
- 5: 5u" GOLD
- 6: 10u" GOLD
- 7: 15u" GOLD
- 9: 30u" GOLD



TOLERANCES

X.±0.40	.XX±0.20
.X±0.30	.XXX±0.10



REV. A DRAWN BY Zhong 2019/3/13
 APPROVED BY Lion 2019/3/13

TITLE	BATTERY, 2.50mm PITCH, PCB MOUNT, R/A SMT, WITH PAD & FORK, FEMALE			
DRAW NO.	ABTGW-001	UNIT	MM	Sheet
				1/1