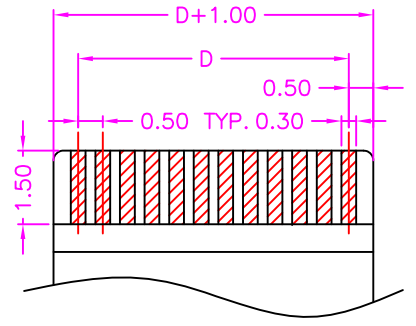
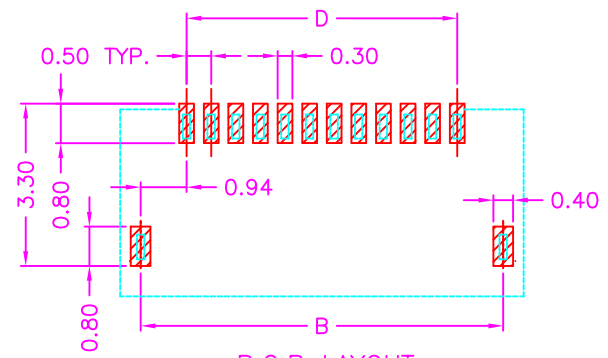
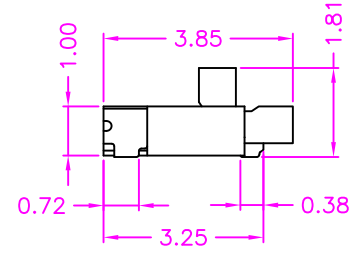
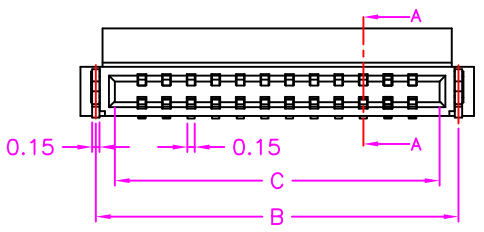


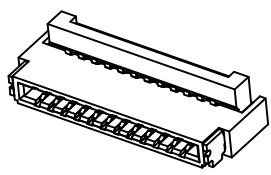
SECTION: A-A



APPLICABLE FFC DIMENSION(REF) THICKNESS 0.30 ±0.02



P.C.B. LAYOUT TOP VIEW ±0.05



MATERIALS

HOUSING: HI-TEMP. PLASTIC (UL 94V-0), BLACK
 ACTUATOR: HI-TEMP. PLASTIC (UL 94V-0), BLACK
 SOLDER PAD: COPPER ALLOY, TIN PLATING
 TERMINAL: COPPER ALLOY, GOLD PLATED

SPECIFICATION

CURRENT RATING: 0.5 AMP MAX
 DIELECTRIC WITHSTANDING: 250V AC FOR ONE MINUTE
 CONTACT RESISTANCE: 30m OHMS MAX
 INSULATION RESISTANCE: 50M OHMS MIN AT DC 250V
 OPERATION TEMPERATURE: -55°C~+85°C

PART NUMBER:

AFPDF - 5 * * * - 1 2 5

SERIES — BACK FLIP — NO. OF POS. REF. TABLE — TERMINAL PLATED OPTION
 1: GOLD FLASH
 3: 3u" GOLD
 5: 5u" GOLD
 6: 10u" GOLD
 7: 15u" GOLD
 9: 30u" GOLD
 T: TIN

TABLE

PIN	A	B	C	D	PIN	A	B	C	D
04	4.00	3.37	2.60	1.50	33	18.50	17.87	17.10	16.00
05	4.50	3.87	3.10	2.00	34	19.00	18.37	17.60	16.50
06	5.00	4.37	3.60	2.50	35	19.50	18.87	18.10	17.00
07	5.50	4.87	4.10	3.00	36	20.00	19.37	18.60	17.50
08	6.00	5.37	4.60	3.50	37	20.50	19.87	19.10	18.00
09	6.50	5.87	5.10	4.00	38	21.00	20.37	19.60	18.50
10	7.00	6.37	5.60	4.50	39	21.50	20.87	20.10	19.00
11	7.50	6.87	6.10	5.00	40	22.00	21.37	20.60	19.50
12	8.00	7.37	6.60	5.50	41	22.50	21.87	21.10	20.00
13	8.50	7.87	7.10	6.00	42	23.00	22.37	21.60	20.50
14	9.00	8.37	7.60	6.50	43	23.50	22.87	22.10	21.00
15	9.50	8.87	8.10	7.00	44	24.00	23.37	22.60	21.50
16	10.00	9.37	8.60	7.50	45	24.50	23.87	23.10	22.00
17	10.50	9.87	9.10	8.00	46	25.00	24.37	23.60	22.50
18	11.00	10.37	9.60	8.50	47	25.50	24.87	24.10	23.00
19	11.50	10.87	10.10	9.00	48	26.00	25.37	24.60	23.50
20	12.00	11.37	10.60	9.50	49	26.50	25.87	25.10	24.00
21	12.50	11.87	11.10	10.00	50	27.00	26.37	25.60	24.50
22	13.00	12.37	11.60	10.50	51	27.50	26.87	26.10	25.00
23	13.50	12.87	12.10	11.00	52	28.00	27.37	26.60	25.50
24	14.00	13.37	12.60	11.50	53	28.50	27.87	27.10	26.00
25	14.50	13.87	13.10	12.00	54	29.00	28.37	27.60	26.50
26	15.00	14.37	13.60	12.50	55	29.50	28.87	28.10	27.00
27	15.50	14.87	14.10	13.00	56	30.00	29.37	28.60	27.50
28	16.00	15.37	14.60	13.50	57	30.50	29.87	29.10	28.00
29	16.50	15.87	15.10	14.00	58	31.00	30.37	29.60	28.50
30	17.00	16.37	15.60	14.50	59	31.50	30.87	30.10	29.00
31	17.50	16.87	16.10	15.00	60	32.00	31.37	30.60	29.50
32	18.00	17.37	16.60	15.50					