

$$A = (\text{NUMBER OF POS.}) \times 0.50 + 3.60$$

$$B = (\text{NUMBER OF POS.}) \times 0.50 + 3.50$$

$$C = (\text{NUMBER OF POS.}) \times 0.50 + 0.60$$

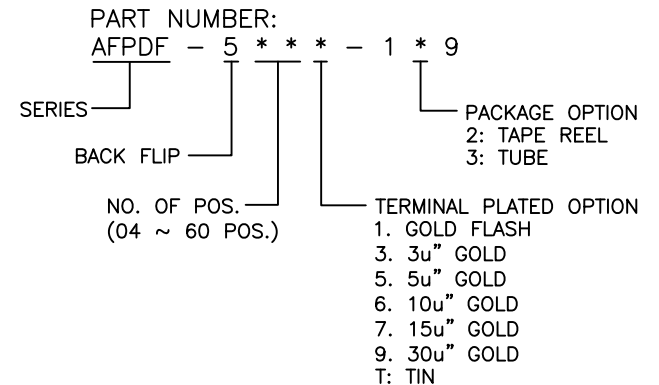
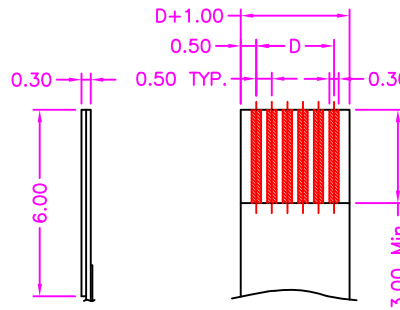
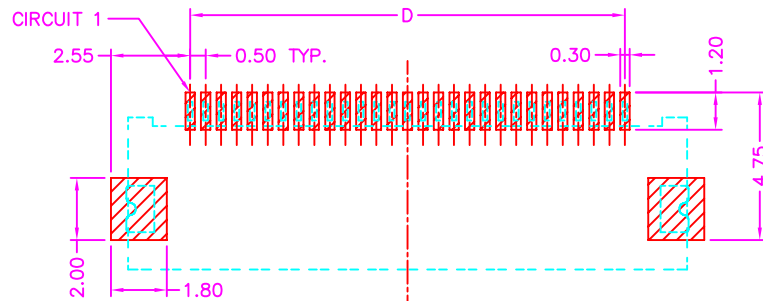
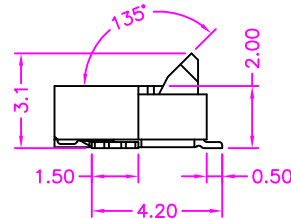
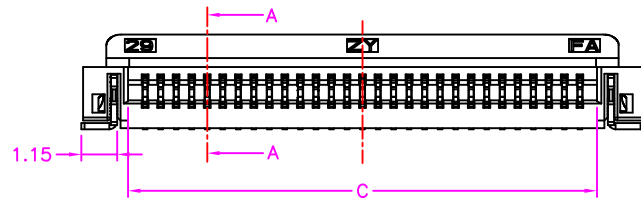
$$D = (\text{NUMBER OF POS.} - 1) \times 0.50$$

MATERIALS

HOUSING: HI-TEMP. PLASTIC (UL 94V-0), NATURAL
 ACTUATOR: HI-TEMP. PLASTIC (UL 94V-0), BLACK
 SOLDER PAD: COPPER ALLOY, TIN PLATING
 TERMINAL: COPPER ALLOY

SPECIFICATION

CURRENT RATING: 0.5 AMP MAX
 DIELECTRIC WITHSTANDING: 250V AC FOR ONE MINUTE
 CONTACT RESISTANCE: 30m OHMS MAX
 INSULATION RESISTANCE: 50M OHMS MIN AT DC 250V
 OPERATION TEMPERATURE: -55°C~+85°C



B	MODIFY HOUSING	2023.1.29
A	RELEASE	2018.12.20
REV.	DESCRIPTION	DATE



TOLERANCES

X.±0.40	.XX±0.20
.X±0.30	.XXX±0.10

REV.	B	DRAWN BY	Zhong 2018/12/20	TITLE	FPC 0.50mm PITCH, PCB MOUNT, SMT, BACK FLIP, ZIF, H=2.00mm, FEMALE				
		APPROVED BY	Lion 2018/12/20	DRAW NO.	AFPDF-009	UNIT	MM	Sheet	1/1