

A=(NUMBER OF POS.)X0.50+5.6
 B=(NUMBER OF POS.)X0.50+4.5
 C=(NUMBER OF POS.)X0.50+0.6
 D=(NUMBER OF POS.-1)X0.50
 E=NUMBER OF POS. (4 ~ 34)=4.40
 E=NUMBER OF POS. (35 ~ 60)=4.95
 F=NUMBER OF POS. (4 ~ 34)=5.65
 F=NUMBER OF POS. (35 ~ 60)=6.20

MATERIALS

HOUSING: HI-TEMP. PLASTIC (UL 94V-0), BEIGE
 ACTUATOR: HI-TEMP. PLASTIC (UL 94V-0), BLACK
 SOLDER PAD: COPPER ALLOY, TIN PLATED
 CAP: STAINLESS STEEL
 TERMINAL: COPPER ALLOY, GOLD OR TIN PLATED

SPECIFICATION

CURRENT RATING: 0.5 AMP MAX
 DIELECTRIC WITHSTANDING: 250V AC FOR ONE MINUTE
 CONTACT RESISTANCE: 30m OHMS MAX
 INSULATION RESISTANCE: 50M OHMS MIN AT DC 250V
 OPERATION TEMPERATURE: -55°C~+85°C

PART NUMBER:

AFPDH - * * * - 1 * 1 *

SERIES

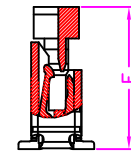
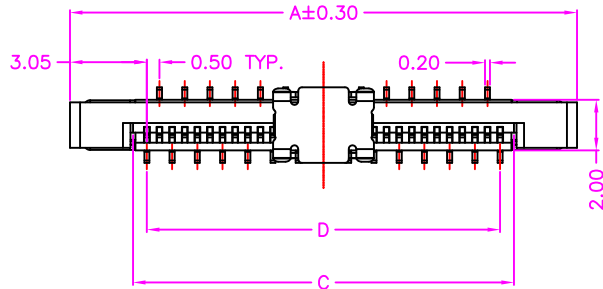
NO. OF POS.
(04 ~ 60 POS.)

TERMINAL PLATED OPTION

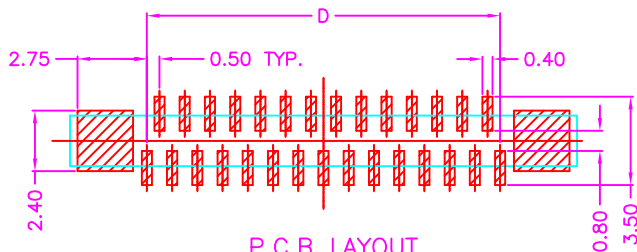
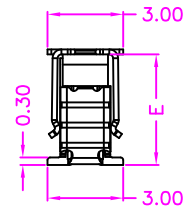
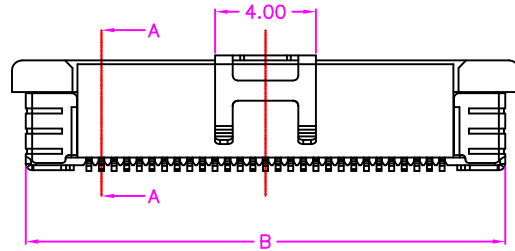
- 1: GOLD FLASH
- 3: 3u" GOLD
- 5: 5u" GOLD
- 6: 10u" GOLD
- 7: 15u" GOLD
- 9: 30u" GOLD
- T: TIN

CAP OPTION
BLANK: W/O CAP
C: WITH CAP

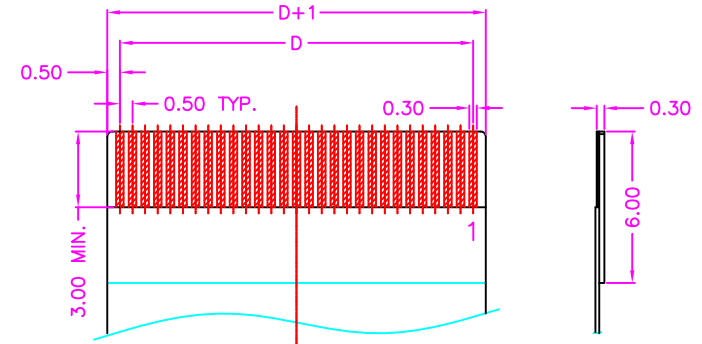
PACKAGE OPTION
2: TAPE REEL
3: TUBE



SECTION A-A



P.C.B LAYOUT
TOP VIEW ±0.05



APPLICABLE FPC
PRECOMMENDED DIMENSION