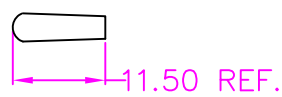


P1: RF1

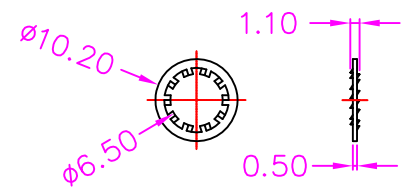
P2: SMA



TRANSPARENT TUBE



NUT



WASHER

INFORMATION

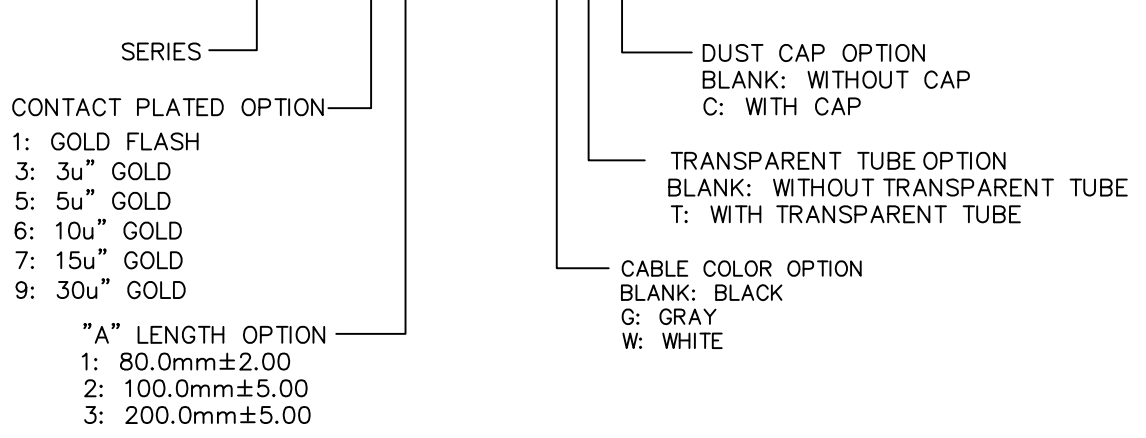
- P1: RF1, BLACK IN INSULATOR COLOR  
GOLD PLATING ON CONTACT AREA
- P2: SMA, WHITE IN INSULATOR COLOR, GOLD PLATED ON SHELL  
GOLD PLATING ON CONTACT AREA
- CABLE: 1.13mm, BLACK
- HEAT SHRINK TUBE: THERMOPLASTIC, BLACK
- DUST CAP: THERMOPLASTIC, RED
- TRANSPARENT TUBE: PVC, TRANSPARENT
- NUT: COPPER ALLOY, GOLD PLATING
- WASHER: COPPER ALLOY, GOLD PLATING

SPECIFICATION

- IMPEDANCE: 50 OHMS
- FREQUENCY RANGE: 0-6 GHz
- VSWR: 2.00 MAX

PART NUMBER:

LPXSA - \* \* - 7 9 \* \* \*



TOLERANCES	
X.±1.00	.XX±0.40
.X±0.50	.XXX±0.30

REV.	A

DRAWN BY	KiKi 2022/5/17
APPROVED BY	Lion 2022/5/17

TITLE	MICRO COAXIAL (RF1) R/A FEMALE TO SMA VERTICAL FEMALE, CABLE				
DRAW NO.	LPXSA-009	UNIT	MM	Sheet	1/1