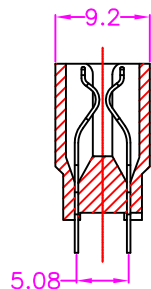
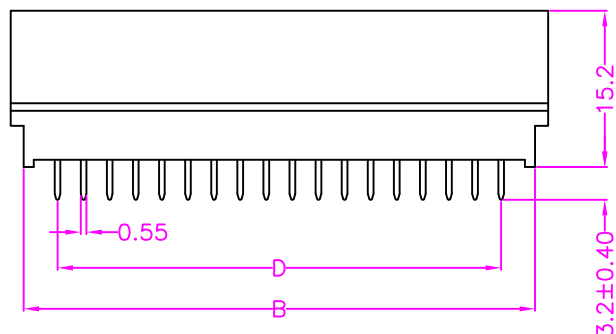
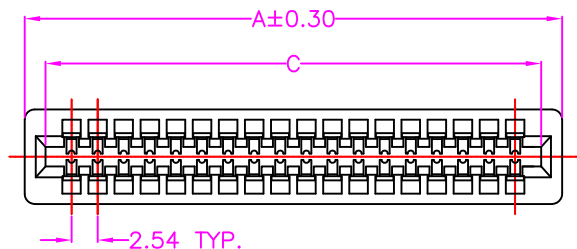


MATERIALS

HOUSING: THERMOPLASTIC (UL 94V-0)
 TERMINAL: COPPER ALLOY, GOLD PLATED ON CONTACT AREA
 TIN PLATING ON SOLDER TAIL

SPECIFICATION

CURRENT RATING: 3 AMP MAX
 DIELECTRIC WITHSTANDING: 1000V AC FOR ONE MINUTE
 CONTACT RESISTANCE: 20m OHMS MAX
 INSULATION RESISTANCE: 5000M OHMS MIN AT DC 500V
 OPERATION TEMPERATURE: -55°C~+85°C



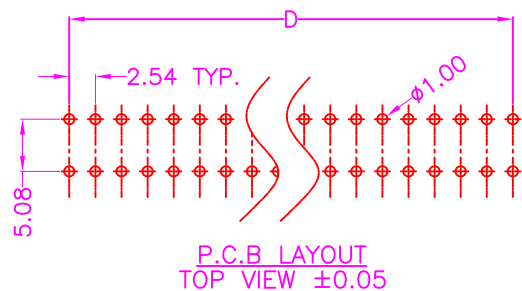
PART NUMBER:

MCECA - * * * * T - 1 5 2

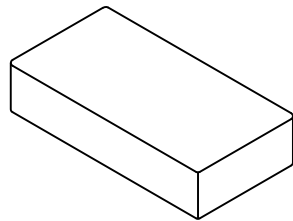
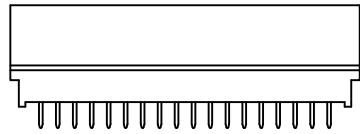
SERIES — * * * *
 NO. OF POS. — T
 BOX PACKAGE — 1 5 2
 TIN PLATING ON SOLDER TAIL —

CONTACT PLATED OPTION

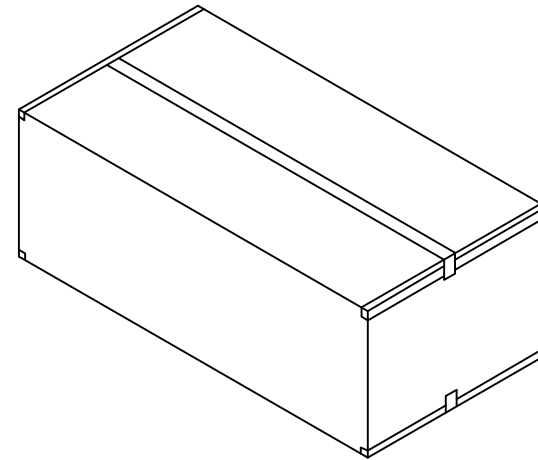
- 1: GOLD FLASH
- 3: 3u" GOLD
- 5: 5u" GOLD
- 6: 10u" GOLD
- 7: 15u" GOLD
- 9: 30u" GOLD



NO.OF POSITIONS	A	B	C	D	NO.OF POSITIONS	A	B	C	D
006	14.22	12.12	10.16	5.08	048	67.56	65.46	63.50	58.42
008	16.76	14.66	12.70	7.62	050	70.10	68.00	66.04	60.96
010	19.30	17.20	15.24	10.16	052	72.64	70.54	68.58	63.50
012	21.84	19.74	17.78	12.70	054	75.18	73.08	71.12	66.04
014	24.38	22.28	20.32	15.24	056	77.72	75.62	73.66	68.58
016	26.92	24.82	22.86	17.78	058	80.26	78.16	76.20	71.12
018	29.46	27.36	25.40	20.32	060	82.80	80.70	78.74	73.66
020	32.00	29.90	27.94	22.86	062	85.34	83.34	81.28	76.20
022	34.54	32.44	30.48	25.40	064	87.88	85.78	83.82	78.74
024	37.08	34.98	33.02	27.94	066	90.42	88.32	86.36	81.28
026	39.62	37.52	35.56	30.48	068	92.96	90.86	88.90	83.82
028	42.16	40.06	38.10	33.02	070	95.50	93.40	91.44	86.36
030	44.70	42.60	40.64	35.56	072	98.04	95.94	93.98	88.90
032	47.24	45.14	43.18	38.10	080	108.20	106.10	104.14	99.06
034	49.78	47.68	45.72	40.64	086	115.82	113.72	111.76	106.68
036	52.32	50.22	48.26	43.18	092	123.44	121.34	119.38	114.30
038	54.86	52.76	50.80	45.72	098	131.06	128.96	127.00	121.92
040	57.40	55.30	53.34	48.26	100	133.60	131.50	129.54	124.46
042	59.94	57.84	55.88	50.80	104	138.68	136.58	134.62	129.54
044	62.48	60.38	58.42	53.34					
046	65.02	62.92	60.96	55.88					



BOX



NOTE: 100PCS/ BOX, 1000PCS/ 10 BOX/ CARTON (50PIN)

