

MATERIALS

HOUSING: LCP (UL 94V-0), BLACK  
 TERMINAL: COPPER ALLOY, GOLD PLATED

PART NUMBER:

FQCKB - 3 8 \* - 1 2 4

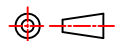
SERIES

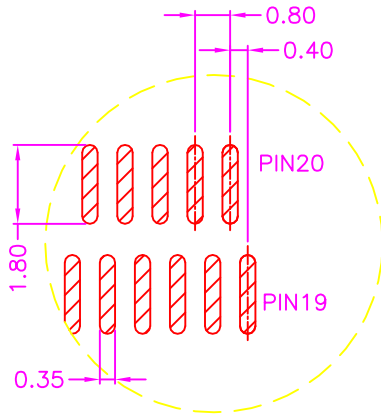
NO. OF POS.

TAPE REEL PACKAGE

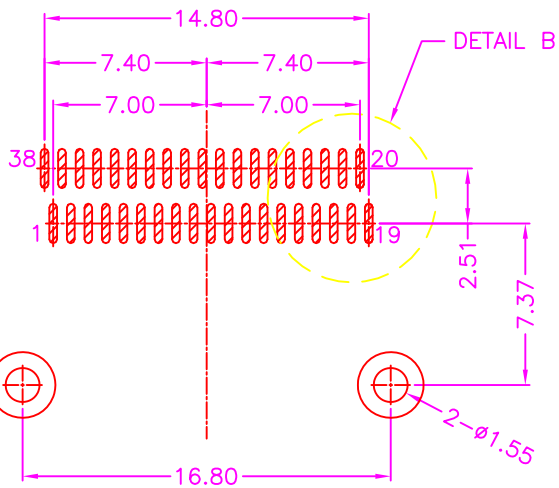
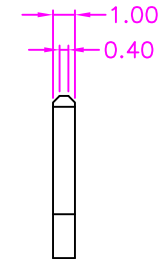
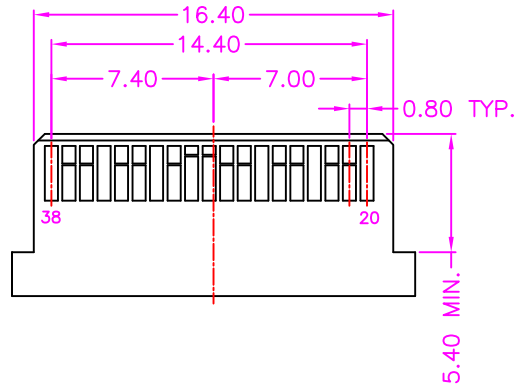
CONTACT PLATED OPTION

- 1: GOLD FLASH
- 3: 3u" GOLD
- 5: 5u" GOLD
- 6: 10u" GOLD
- 7: 15u" GOLD
- 9: 30u" GOLD

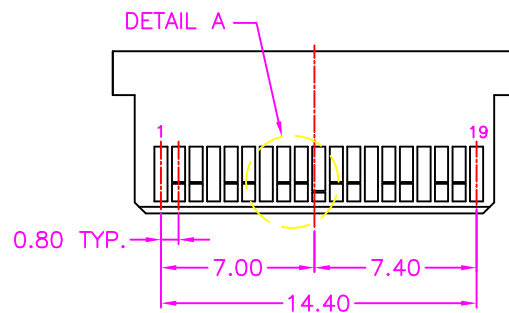




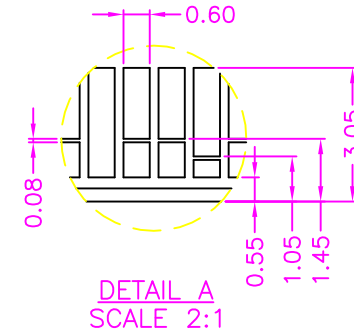
DETAIL B  
SCALE 2:1



P.C.B. LAYOUT  
TOP VIEW ±0.05



QSFP28 MOUDLE CARD



DETAIL A  
SCALE 2:1